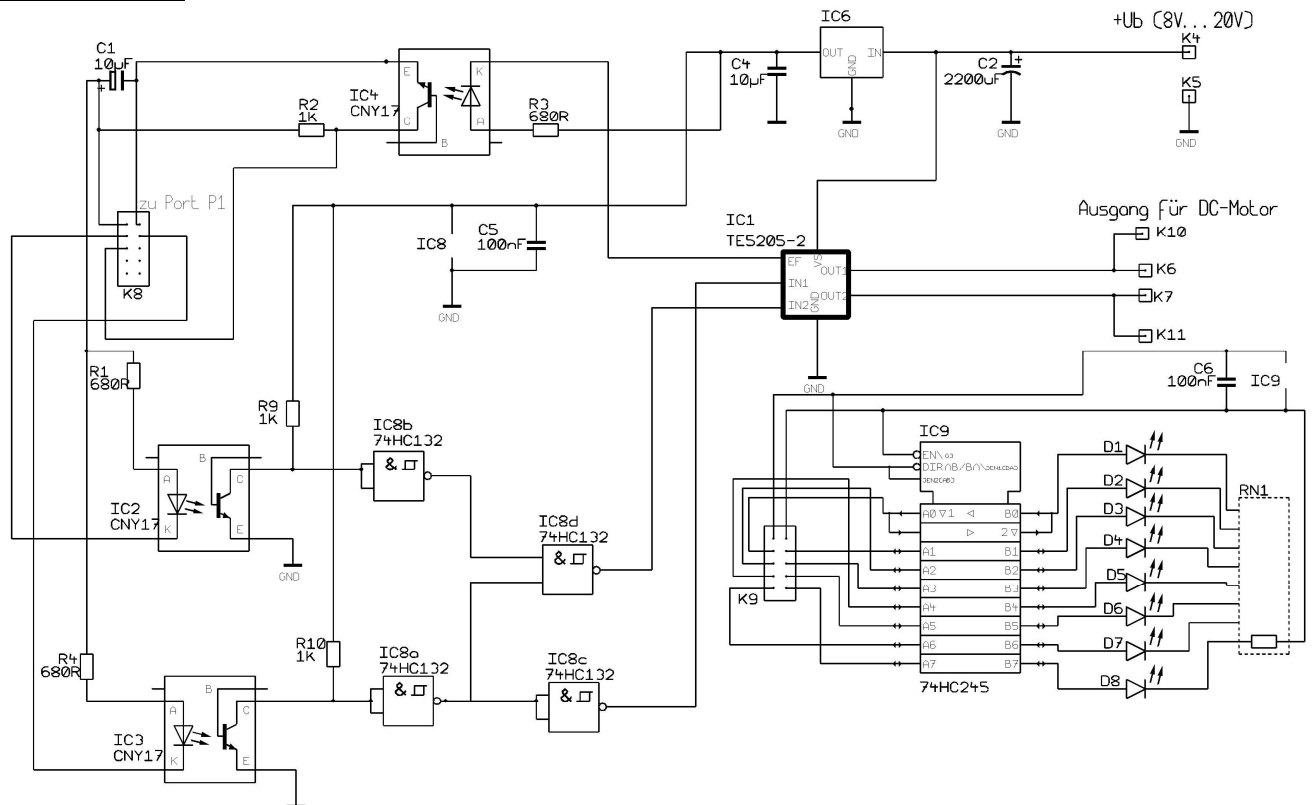
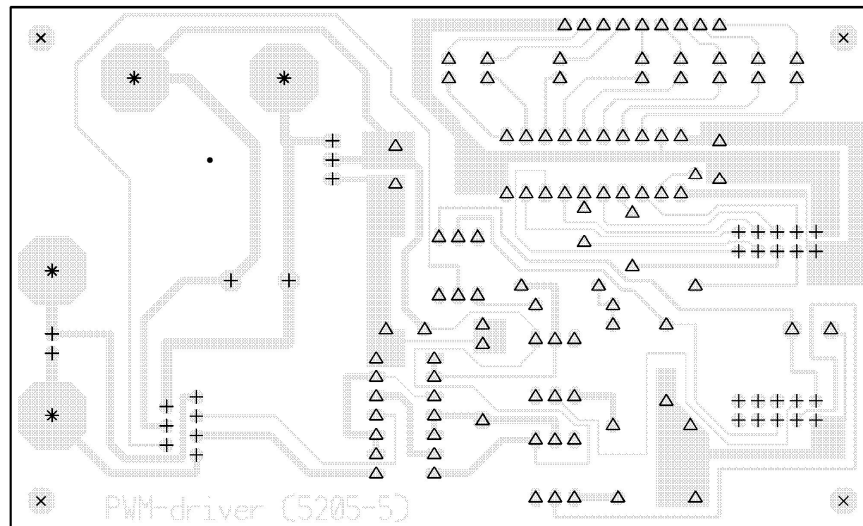


Stromlaufplan:



Bohrplan



Es werden 5 Bohrer benötigt:

105 x 0,8 mm: Leeres Dreieck.

34 x 1,0 mm: Kreuz.

4 x 3,2 mm: X.

4 x 6,0 mm: Stern.

Name:	Elektronikschule Tettnang	Datum:	Blatt: