

# Installation of PUFF for Windows7

by Gunthard Kraus

## Step 1:

Create a new folder named „PUFF“ on your hard disk. Then copy all necessary PUFF files from the CD into this folder (source: Installation\_English / All\_files\_for\_PUFF-folder).

## Step 2:

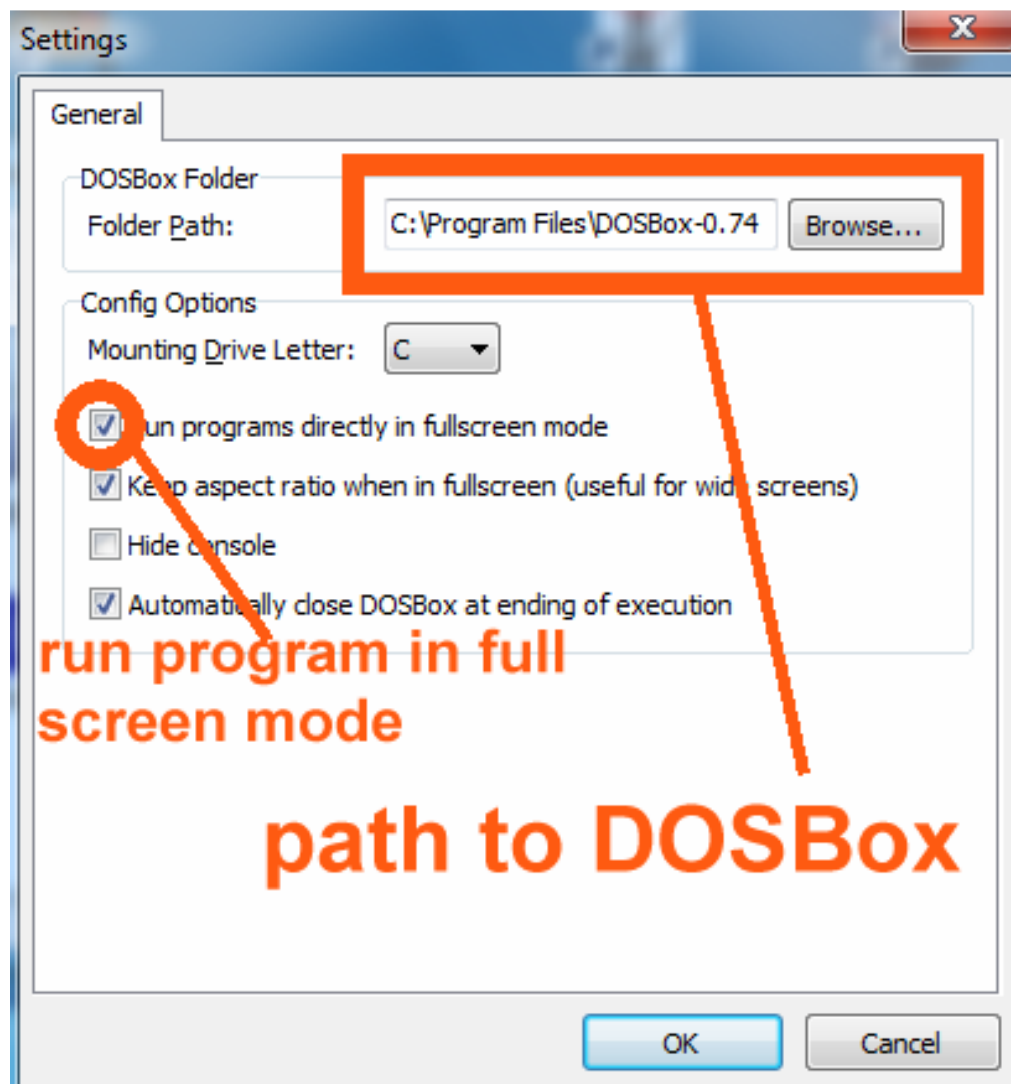
Search for “dosbox.exe” in this new PUFF folder and start the installation. So you'll get a “DOSBox“ on your PC for executing DOS Software.

## Step 3:

The same procedure once more, but now for “dosshell.exe“.

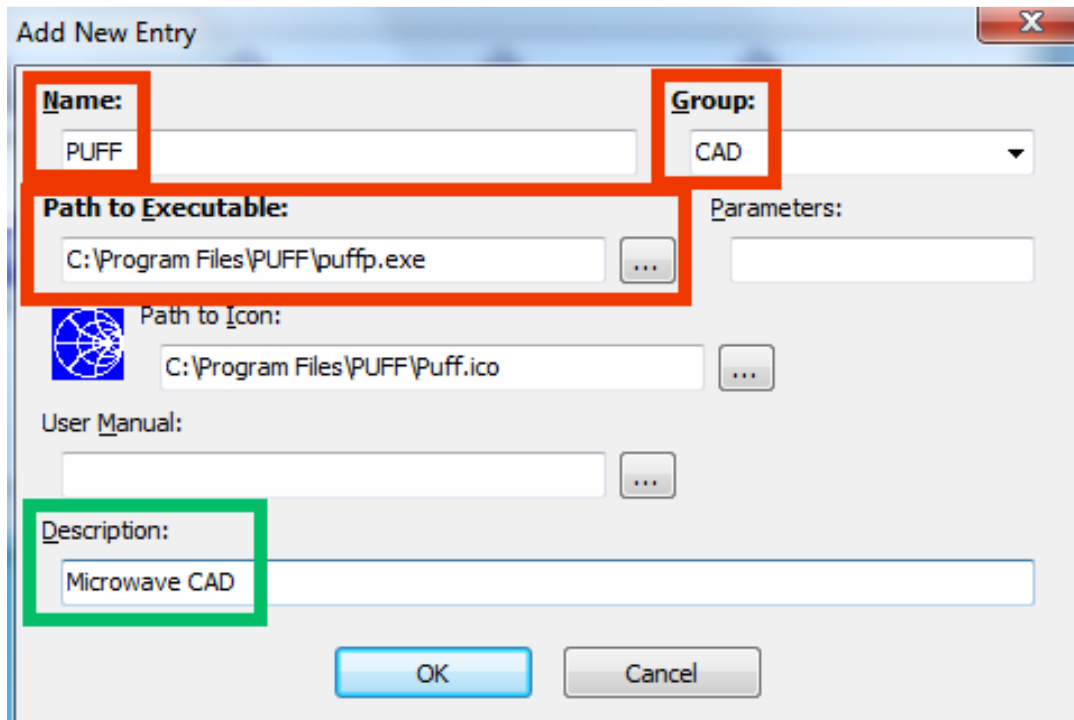
## Step 4:

The DOSBox and the DOS shell must be connected together. Please **open the DOS shell** by clicking on the **icon on the Windows screen**, call “edit” and “settings” and **install the folder path to the DOSBox folder**:



### Step 5:

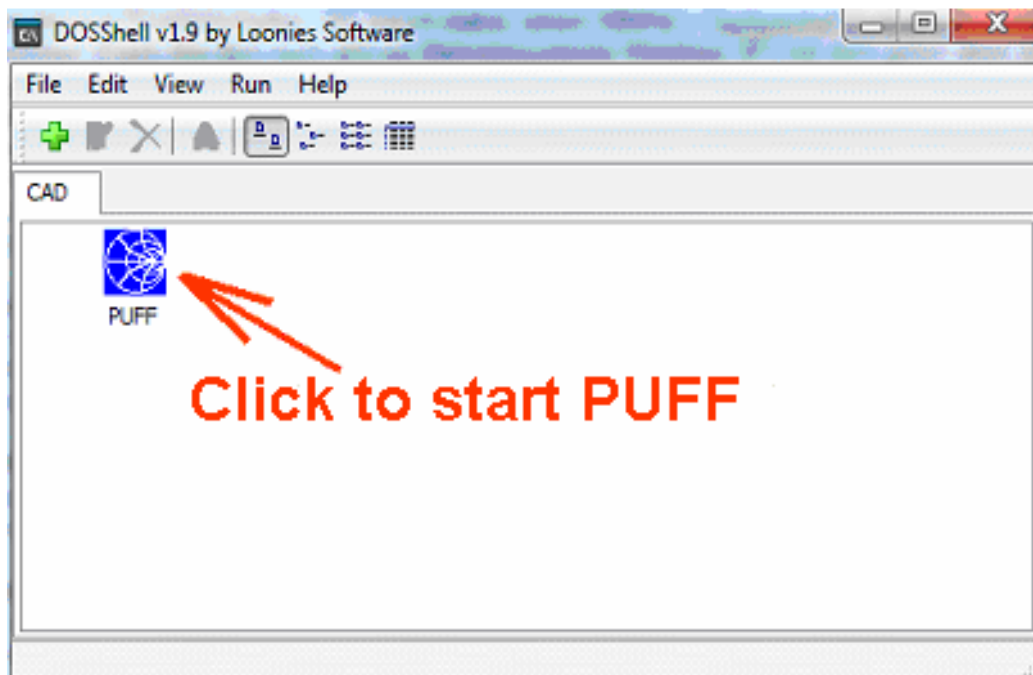
Open again the DOS shell, but now click on “edit” and „Add new entry“:



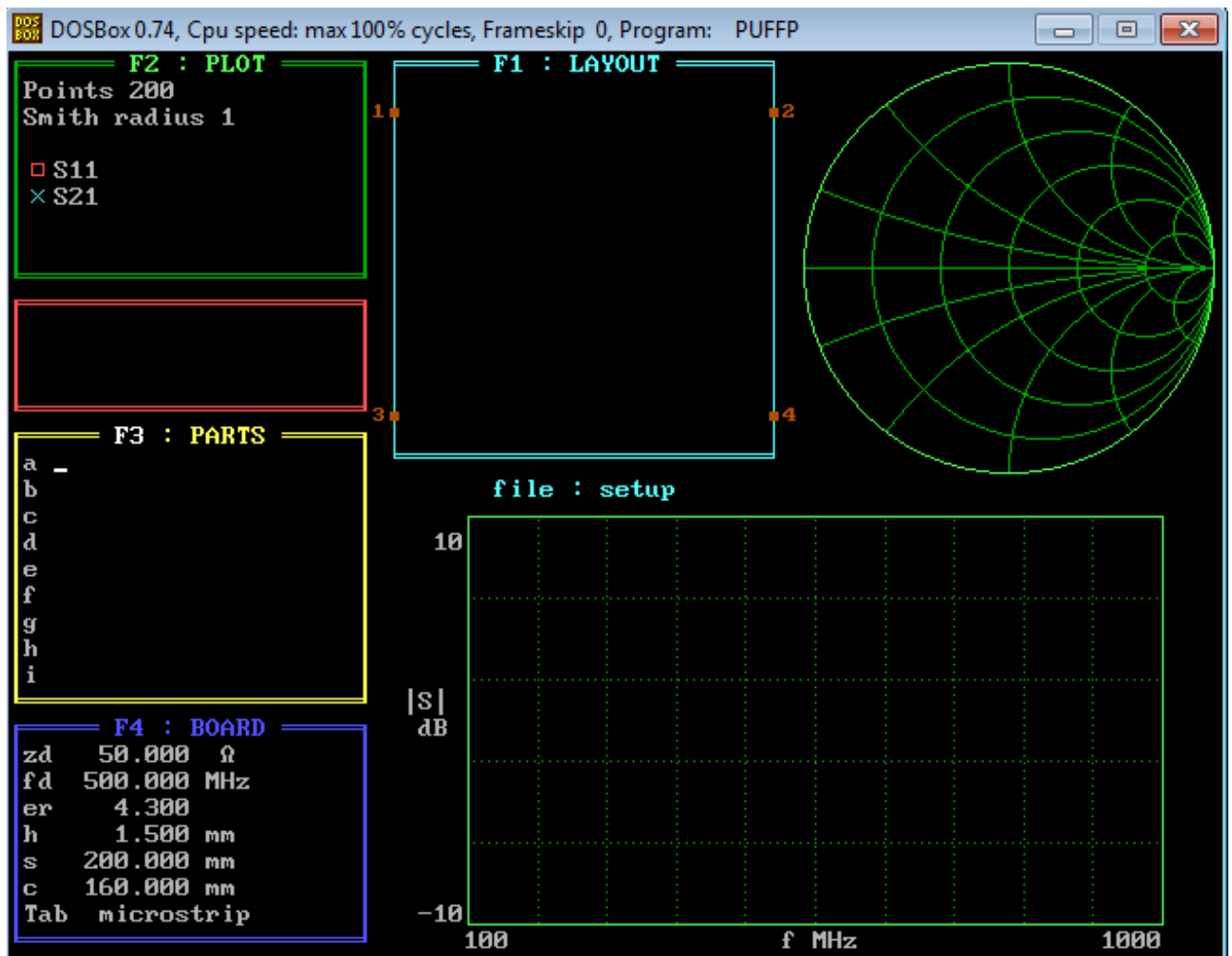
The red marked entries are obligatory, otherwise nothing will work. (= name / group / path to exe file). The other entries are options but in your PUFF folder you find a nice little Smith Chart to create a PUFF icon.

### Step 6

That's all! If you now start the DOS shell and click on the PUFF icon you will get exactly that what you want...



....and that is the PUFF main screen after <Return> to finish the pre-information:



Please try <ALT + RETURN> to toggle between full screen mode and window mode.

Now do not hesitate to instantly install the free „Irfan View“ Graphic software. Then you can use a screen shot for cutting out and printing out your simulation results or the circuit or the list of used parts...(the source for Irfan View on the CD is “Additional Software”).

That's all -- now print out the tutorial (= more than 100 pages with interesting projects...) and have fun with it.