

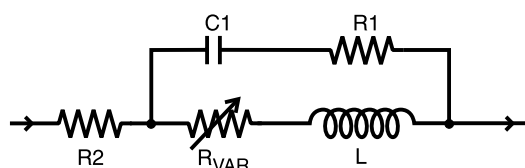
SPICE Model – 1812CS

This lumped-element (SPICE) model data simulates the frequency-dependent behavior of Coilcraft RF surface mount inductors from 1 MHz to the upper frequency limit shown in the accompanying table.

The equivalent lumped element model schematic is shown below. The element values R1, R2, C, and L are listed for each component value. The value of the frequency-dependent variable resistor R_{VAR} relates to the skin effect and is calculated from:

$$R_{VAR} = k * \sqrt{f}$$

- k is shown for each value in the accompanying table.
- f is the frequency in Hz



The data represents de-embedded measurements, as described below. Effects due to different customer circuit board traces, board materials, ground planes or interactions with other components are not included and can have a significant effect when comparing the simulation to measurements of the inductors using typical production verification instruments and fixtures.

Typically, the Self-Resonant Frequency (SRF) of the component model will be higher than the measurement of the component mounted on a circuit board. The parasitic reactive elements of a circuit board or fixture will effectively lower the circuit resonant frequency, especially for very small inductance values. Since data sheet specifications are based on typical production measurements, and the SPICE models are based on de-embedded measurements as described below, the model results may be different from the data sheet specifications.

Lumped Element Modeling Method

The measurements were made over a brass ground plane with each component centered over an air gap, as illustrated in Figure 1. The gap width for each size component is given in Table 1. The test pads were 30 mil (50 Ohm) wide traces of tinned gold over 25 mil thick

Table 1. Test Gap

Size	Gap Width (inch / mm)
0402	0.017 / 0.432
0603	0.026 / 0.660
0805	0.040 / 1.016
1008	0.060 / 1.524
1206	0.080 / 2.032
1812	0.120 / 3.048

alumina, and were not included in the gap. The TRL* calibration plane is also illustrated in Figure 1.

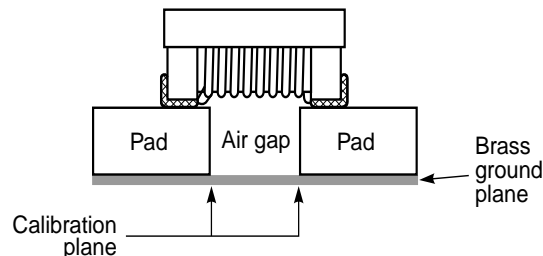


Figure 1. Test Setup

The lumped element values were determined by matching the simulation model to an average of the measurements. This method results in a model that represents as closely as possible the typical frequency-dependent behavior of the component up to a frequency just above the self-resonant frequency of the model.

The lumped element models were used to generate our 2-port S-parameters and therefore give identical results. The S-parameters are available on our web site at <http://www.coilcraft.com/models.cfm>.

Disclaimer

Coilcraft makes every attempt to provide accurate measurement data and software, representative of our components, in a usable format. Coilcraft, however, disclaims all warrants relating to the use of its data and software, whether expressed or implied, including without limitation any implied warranties of merchantability or fitness for a particular purpose. Coilcraft cannot and will not be liable for any special, incidental, consequential, indirect or similar damages occurring with the use of the data and/or software.

Coilcraft[®]

Specifications subject to change without notice. Document 158-1 Revised 8/15/02

1102 Silver Lake Road Cary, Illinois 60013 Phone 847/639-6400 Fax 847/639-1469

E-mail info@coilcraft.com Web <http://www.coilcraft.com>

SPICE Model for Coilcraft 1812CS Chip Inductors

Part number	R1 (Ω)	R2 (Ω)	C (pF)	L (nH)	k	Upper limit (MHz)	Part number	R1 (Ω)	R2 (Ω)	C (pF)	L (nH)	k	Upper limit (MHz)
1812CS-102	58	1.2	0.143	1.005	4.23E-04	470	1812CS-682	203	6.6	0.166	6.800	2.58E-03	170
1812CS-122	63	1.2	0.148	1.220	5.28E-04	420	1812CS-822	212	7.0	0.202	8.200	3.30E-03	140
1812CS-152	72	1.6	0.135	1.520	5.76E-04	390	1812CS-103	244	7.7	0.210	10.000	4.98E-03	130
1812CS-182	72	2.0	0.127	1.820	6.21E-04	370	1812CS-123	244	8.7	0.241	12.000	3.65E-03	110
1812CS-222	80	2.2	0.150	2.250	8.60E-04	310	1812CS-153	288	9.6	0.312	15.000	4.91E-03	90
1812CS-272	68	3.2	0.123	2.700	9.80E-04	310	1812CS-183	286	10.5	0.370	18.000	7.21E-03	70
1812CS-332	81	3.8	0.120	3.330	1.12E-03	260	1812CS-223	318	11.5	0.342	22.000	8.70E-03	70
1812CS-392	121	5.0	0.118	3.950	1.12E-03	240	1812CS-273	338	12.5	0.540	26.890	1.12E-02	50
1812CS-472	85	5.4	0.122	4.775	1.80E-03	220	1812CS-333	266	13.5	0.885	32.750	1.77E-02	40
1812CS-562	198	5.7	0.165	5.700	2.01E-03	190							



Specifications subject to change without notice. Document 158-17 Revised 11/13/02

1102 Silver Lake Road Cary, Illinois 60013 Phone 847/639-6400 Fax 847/639-1469

E-mail info@coilcraft.com Web <http://www.coilcraft.com>